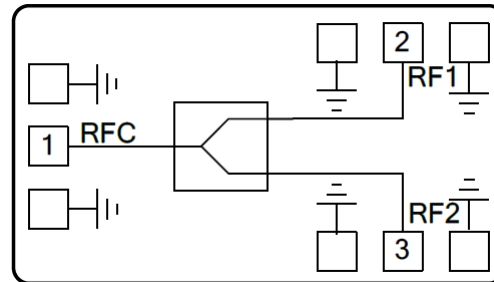


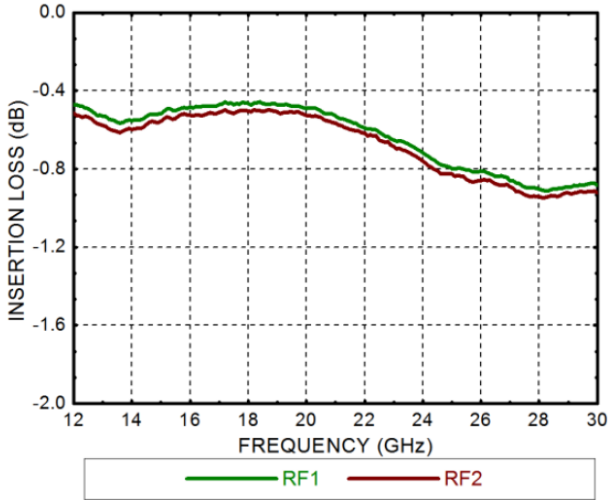
**Features**

- Frequency: 12-30GHz
- Insertion Loss: 0.9dB
- Input/Output: 50Ω matched
- Die Size: 1.5 x 0.95 x 0.1 mm

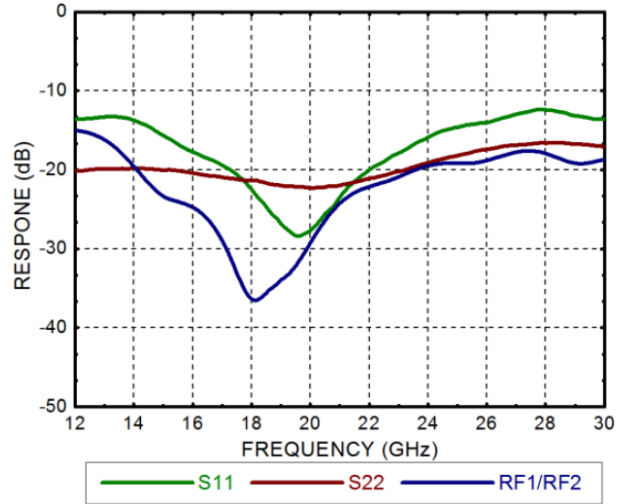
**Functional Block Diagram**

**Electrical Specifications**
**TA = +25°C, Pin=0dBm**

| Parameters            | Min. | Typ.         | Max. | Units      |
|-----------------------|------|--------------|------|------------|
| <b>Frequency</b>      |      | <b>12-30</b> |      | <b>GHz</b> |
| <b>Insertion Loss</b> |      | <b>0.9</b>   |      | <b>dB</b>  |
| <b>Flatness</b>       |      | <b>±0.2</b>  |      | <b>dB</b>  |
| <b>Isolation</b>      |      | <b>20</b>    |      | <b>dB</b>  |
| <b>Return Loss</b>    |      | <b>15</b>    |      | <b>dB</b>  |

**Insertion Loss**

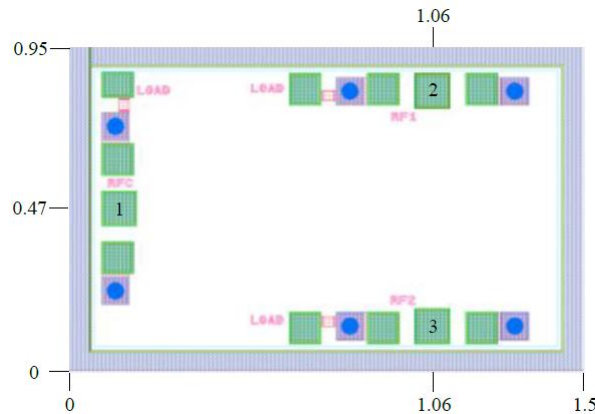


**Isolation & Return Loss**



**Outline Drawing:**

All Dimensions in mm



**Pad Description**

| Pad | Function | Description    |
|-----|----------|----------------|
| 1   | RFC      | RF Common Port |
| 2,3 | RF1,RF2  | RF Branch Port |

**Maximum Ratings:**

1. Maximum input power: +37dBm
2. Operating temperature: -55°C to +85°C
3. Storage temperature: -65°C to +175°C